



LIGHT OIL BURNER SERIE G 2003

1 stage for cast iron boilers from 14 up to 59 kW



Burners for diesel, single stage, aluminium frame, protection cover with noise reduction plate, combustion head specific for cast iron boilers and combustion chambers with small length.

Micro adjustment of the head, high efficiency and high flame stability. Compact overall dimensions and disposition rationalized of the components with accessibility facilitated for the operations of setting and maintenance.

In the versions H hydraulic device of closing air shutter. In the versions R preheater with control of temperature for soft and secure ignitions also at low temperatures.

On demand specific versions: kerosene, biodiesel.

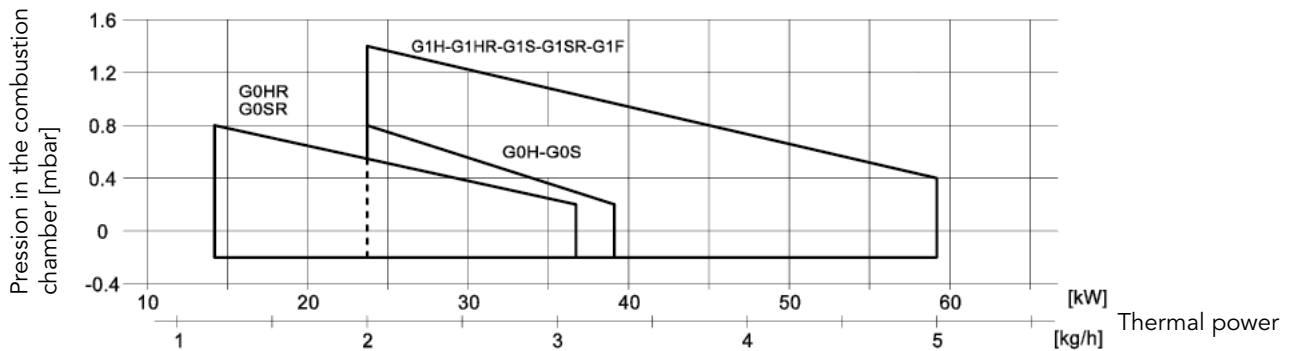
Complete of connector 7 poles, flange and gasket for installation on boiler, nozzle, flexible pipes, line filter.

TECHNICAL DATA

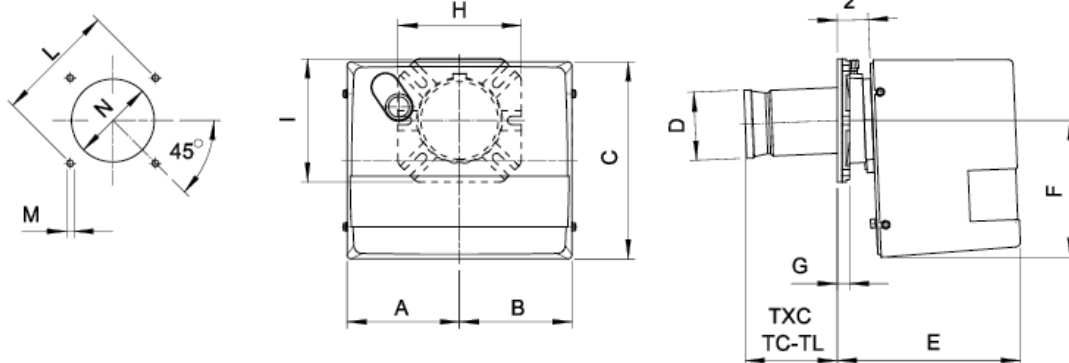
MODEL		G 0SR G 0HR	G 0S G 0H	G 1HR G 1SR	G 1H G 1S
Flow min-max*	kg/h	1.2-3.1	2.0-3.3	2.0-5.0	2.0-5.0
Thermal power min-max*	Mcal/h	12.2-31.6	20.4-33.7	20.4-51	20.4-51
Thermal power min-max*	kW	14.2-36.7	23.7-39.1	23.7-59.2	23.7-59.2
Fuel	LIGHT OIL 1.5°E a 20°C = 6.2 cSt = 35 sec Redwood N°1				
Intermittent working operation (min. 1 stop every 24 hours) 1 stage					
Environmental conditions operation/storage	-15...+40°C/-20...+70°C, rel. humidity max 80%				
Max temperature combustion air	°C	60	60	60	60
Nominal electric power	W	190	120	220	130
Motor fan	W	90	90	100	100
Nominal absorption	A	0.9	0.6	1	0.6
Pre-heater	W	30-110	-	30-110	-
Power supply	1/N ~ 230V- 50Hz				
Degree of electric protection		IP40	IP40	IP40	IP40
Noisiness** min-max		56-58	56-58	57-59	57-59
Weight burner	kg	9	9	11	11

* Reference conditions: Environment temperature 20°C - Barometric pressure 1013 mbars - Altitude 0 mt (sea level)
** Measured sound power in the combustion lab, with functional burner on beta boiler in a distance of 1 m.

FIRING RATES: Thermal power - Pressure in combustion chamber



DIMENSIONS (mm)



* Suggested dimension of connection between burner and generator

MODEL	A	B	C	D	E	F	G	H	I	L		M	N			TXC	TC	TL	
										min	max		min	*	max				
G 0... 2003	137	137	240	83	223	169	15	150	150	130	150	170	M8	90	110	130	77	112	152
G 1... 2003	157	170	275	83	265	210	15	150	150	130	150	170	M8	90	110	130	-	112	152

Le illustrazioni e i dati riportati sono indicativi. F.B.R. Bruciatori S.r.l. si riserva il diritto di apportare, senza obbligo di preavviso, tutte le modifiche opportune, per l'evoluzione dei propri prodotti.
The illustrations and data here shown are indicative. F.B.R. Bruciatori S.r.l. reserves the right to bring, without any obligation of warning, any changes that would be appropriate to the continuing development of their products.